



WINDERMERE
Foundation
2025

COMMUNITY IMPACT REPORT

About Us

Dedicated
to helping
low-income
and homeless
families
since 1989.



At Windermere, we believe in the importance of family and giving back to the communities where we live and work. That's why we created the Windermere Foundation, a 501(C) (3) nonprofit organization that has supported low-income and homeless families throughout the Western U.S. since 1989. For the past 37 years, a portion of every Windermere agent's commission has been donated to the Windermere Foundation. Combined with additional contributions from our agents, franchise owners, staff, and public supporters, these efforts have helped provide more than \$59 million to hundreds of organizations serving those who need support most.



Local Fundraising + Events

In 2025, Windermere agents throughout our network stepped up for their neighbors in need by raising money for the Windermere Foundation, which was then donated to organizations that support low-income and homeless families. The following examples highlight how our agents and offices gave back to their communities throughout the year.

Bozeman, Montana



The Windermere Great Divide Bozeman office presented a \$1,850 donation to Greater Impact Inc., an organization dedicated to empowering individuals through peer support, sober living, family guidance, and community outreach. Funded by agent contributions, this gift supported long-term recovery and lasting change within the local community.

Coeur d'Alene, Idaho



Windermere Coeur d'Alene Realty made back-to-school season brighter with their inaugural "We've Got Your Back" event, donating more than 200 backpacks and school supplies to local students in need. With over 400 attendees and support from generous volunteers, sponsors, and community partners, the event raised funds for both the Windermere Foundation and the Coeur d'Alene Backpack Program.



Kirkland / Bellevue, WA

Windermere Eastside offices continued their longstanding commitment to community giving, donating over \$325K to local nonprofits throughout the year. These contributions supported a wide range of organizations focused on housing stability, food security, education, and family services—creating meaningful impact across the Eastside and surrounding communities.



Columbia River Gorge, OR

When wildfire impacted the Columbia River Gorge, local Windermere offices rallied behind their neighbors with a \$5,000 donation to United Way of the Columbia Gorge's Rowena Fire Relief & Recovery Fund—helping provide immediate support and resources for long-term recovery.





Park City / Salt Lake City, UT

Windermere Utah offices made education a priority this year through both hands-on service and foundation giving. During Community Service Day, agents volunteered at Roots Charter High School, Utah's first farm-based public charter school, where an urban farm serves as a living classroom for sustainable, real-world learning. In addition, the team donated \$3,000 to Roots Charter High School, while agents in Park City contributed \$5,000 to the Park City Education Foundation, supporting innovative programs for local students.



Portland, OR

The Windermere Realty Trust team made a \$15,000 donation to Rose Haven, a Portland shelter that provides safety, stability, and compassionate support to women, children, and gender-expansive individuals experiencing trauma and homelessness. The contribution fully closed Rose Haven's food budget gap through the end of 2025, ensuring uninterrupted access to nourishing meals for their guests.

Sacramento, CA

Windermere Signature Properties offices across the Sacramento region made a meaningful impact this year through foundation grants supporting a variety of local nonprofits focused on health, youth education, and community care. Earlier in the year, Signature Properties and its offices distributed \$75,000 across 15 organizations, including Cancer Champions, Forgotten Soldier, CASA of Placer County, youth and food programs, and more.



Seattle, WA

The Windermere Services Company team in Seattle demonstrated collective generosity through multiple donations throughout the year, contributing more than \$40,000 through the Windermere Foundation to support Sound Foundations Northwest, Seattle Children's Patient Emergency Fund, Food Lifeline, Play Like a Girl, and many more. In addition to financial donations, the team volunteered at the 9/11 Day of Service Meal Packing event, helping pack 200,000 meals for local families facing food insecurity.



Walla Walla, WA

Windermere Walla Walla hosted their annual "Glow While You Bowl" fundraiser, raising \$11,670 to support local nonprofits serving homeless and low-income families. With a Best Dressed award, friendly competition, and strong community turnout, the event showed the power of coming together for a shared cause.



Whatcom County, WA

Windermere Whatcom exceeded their \$15,000 goal during their "Week of Giving", raising exactly \$15,001 for Wild Bird Charity and Blue Skies for Children. These funds supported weekend meals for children facing food insecurity and provided new shoes for students for the 2025-2026 school year.





WINDERMERE FOUNDATION COMEDY NIGHT BENEFIT

Where Laughter Meets Community Impact in Portland and Seattle

For more than two decades, the Windermere Foundation has proudly sponsored the Steve Allen Comedy Show in Portland, benefiting New Avenues for Youth and its work to prevent youth homelessness through housing, counseling, and job training. This year's event featured actor and comedian Kumail Nanjiani and raised \$580,000 in support of the organization.

In Seattle, the annual Windermere Foundation Comedy Night returned to Fremont Studios for its third year, welcoming 350 guests for an evening of connection and generosity highlighted by testimonials from leaders at the YMCA of Greater Seattle and a performance by comedian Kevin Nealon.

Together, the Portland and Seattle events raised nearly \$1 million in 2025, supporting New Avenues for Youth and the YMCA of Greater Seattle.



Windermere Cup



Each spring, the Windermere Cup brings together athletes, partners, and the broader Seattle community for a weekend rooted in tradition, competition, and giving back. Best known as one of the world's premier rowing regattas, the weekend-long event also serves as a powerful platform for community impact.

Giving back is woven throughout the weekend—from the Media Cup, where Seattle news teams race on behalf of nonprofit organizations, to Kids Crew, a program that introduces youth to rowing through hands-on participation and mentorship. These events are followed by the Party on the Cut, which raised more than \$65,000 for the Windermere Foundation and Seattle JazzED in 2025. Featuring live music, local food trucks, games and activities, and twilight sprints, the event reflects Windermere's ongoing commitment to opportunity, connection, and being all in for community.



Community Service Day



Each year, Windermere agents and staff from our 300+ offices dedicate one workday to serving local communities through hands-on volunteer projects. From food banks and shelters to schools, parks, and community centers, teams partner with local organizations to make a direct and meaningful impact in their communities. With more than two million hours of service logged to date, Community Service Day remains a cornerstone of Windermere's commitment to giving back where we live and work.

Golf Tournaments



Throughout the golf season, Windermere offices across the Western U.S. hosted golf tournaments that brought agents, partners, and community members together in support of local causes. From Oregon and Washington to Utah and Idaho, these events combined friendly competition with purpose, raising nearly \$200,000 for the Windermere Foundation and local nonprofit partners.

Notable events included Windermere Sun Valley's inaugural tournament, the Windermere Legends Golf Tournament held at The Golf Club at Newcastle in Washington, annual tournaments hosted by Windermere Realty Trust and Windermere Professional Partners in Portland and Tacoma, and Windermere Utah's second-annual tournament which was held in Park City.

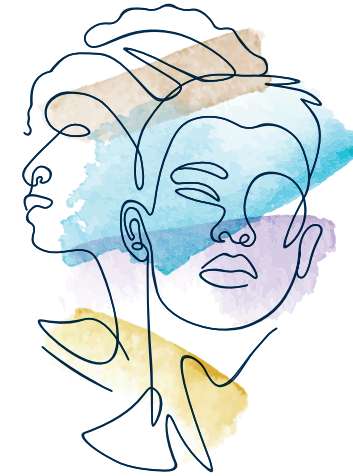


Additional Community Impact



Windermere E3

Windermere agents from Washington, Oregon, and beyond gathered in Suncadia for the annual Windermere E3 event focused on education, connection, and community impact. Through the E3 Blue Party and live and silent auctions, attendees raised more than \$24,000 for the Windermere Foundation, supporting homeless families and individuals in need across our communities. The event highlighted the power of collaboration and generosity, organized and led by agents, for the community.



WIN Scholarship Program

Windermere created the WIN Scholarship program in 2022 to build a more diverse company that better reflects the communities we serve. Funded in part by the Windermere Foundation, this program aims to increase support for new BIPOC real estate agents by subsidizing the costs related to building a successful real estate career. In 2025, we awarded 2 scholarships, bringing the total number of WIN Scholarship recipients to 20 since its inception.

FUNDS PROVIDED IN 2025

\$3,045,256

- Youth/Child Programs **26%**
- Emergency Assistance **16%**
- Fundraising Expenses **16%**
- Food Support **14%**
- Shelter **7%**
- Education **7%**
- School Assistance **5%**
- Administrative Expenses **5%**
- Scholarships **4%**



744

GRANTS FULFILLED

AVERAGE GRANT

\$3,362

545

ORGANIZATIONS SERVED



Recipients

3rd Avenue Marketplace
 9/11 Day
 Aberdeen Association-Winterfest
 Access
 Acres of Diamonds
 Adelante Mujeres
 Advocates for Immigrants in
 Detention Northwest
 Akin
 Alano Club of Portland
 Alderwood Community Church
 Alliance for Education (Eckstein
 Middle School Student Support)
 Amara
 American Red Cross
 American Red Cross Northwest
 Region
 Anacortes Family Center
 Anacortes Schools Foundation
 Animals as Natural Therapy
 Arlington Dollars for Scholars
 Arms Around Bainbridge
 Art for All
 Arts Corps
 Assistance League
 Assistance League of Everett
 Assistance League of Seattle
 Associated Students, Inc.
 Aurora Commons
 Babies of Homelessness
 Backpack Brigade
 Bainbridge High School
 Bainbridge Youth Services
 Ballard Food Bank
 Ballard NW Senior Center
 Beaverton Resource Center
 Bellevue College
 Bellingham High School Boys
 Wrestling
 Benefits Law Center
 Best Buddies

Bicycle Rescue for Youth
 Big Bend Community College
 Big Brothers Big Sisters of
 Snohomish County
 Bike Works
 Birthday Dreams
 Bite2Go – Second Harvest
 Blaine County Charitable Fund
 Blue Mountain Health Cooperative
 Blue Skies for Children
 Bowman Apartments
 Boys & Girls Club of Ballard
 Boys & Girls Club of Bellevue
 Boys & Girls Club of King County
 Boys & Girls Club of Western Lane
 County
 Boys & Girls Club of Snohomish
 County
 Boys & Girls Club of Canyon
 County
 Brooksee Foundation
 Bryant PTA
 Businesses Ending Slavery
 and Trafficking
 Byrd Barr Place
 Camas Washougal Community
 Chest
 Camp Kiwanilong
 Cancer Champions
 Cancer Pathways (Camp Sparkle)
 Caring for Kids
 CASA
 CASA for Children of Klamath
 County
 CASA of Central Oregon
 CASA of Lane County
 CASA of Placer County
 Cascade Parent Partnership
 Cascadia College
 Cascadia Health
 Cascadia PTA
 CDA Backpack Program

Central Downtown Food Basket
 Central Washington University
 Chelan Douglas CASA Program
 Chelan Fire District #7
 Child Advocates
 Children's Justice Center
 Christmas Giving Arts & Crafts Fair
 Clackamas Community College
 Foundation
 Clackamas Women's Services
 Clatsop Community Action
 Regional Food Bank
 Clothes for Kids
 College Possible
 College Success Foundation
 Colorado State University
 Communities in Schools
 Communities in Schools of
 Northwest Washington
 Communities in Schools of
 Peninsula
 Communities in Schools of
 Puyallup
 Communities in Schools of
 Tacoma
 Community for Youth
 Community Foundation of NCW
 Community Roots Housing
 Community Works
 Corbin Senior Activity Center
 Council Groves Apartments
 Coupeville School District
 Cultivate Initiatives
 Dance Fremont
 Daniel Bagley Elementary PTA
 Darian's Gift
 Diamond Dusters
 Digipen Institute of Technology
 Dimmit Middle School PTA
 Domestic Abuse Women's
 Network
 Domestic Violence Services of
 Snohomish County
 Dunlap Elementary PTSA
 Early Life Speech & Language
 Eastern Oregon University
 Edmonds Community College

Edmonds Food Bank
 Elizabeth Gregory Home
 Elk Grove Reads
 Empower Youth Network
 Everett Public Schools Foundation
 Everett YMCA
 Everett Youth Soccer Club
 Evergreen Beauty College
 Family Building Blocks
 Family Law CASA of King County
 Family Promise
 Family Promise of Grays Harbor
 Family Promise of Lewis Clark
 Valley, Inc.
 Family Promise of Metro East
 Family Promise of Skagit Valley
 Family Support Program @ Rising
 Star Elementary School
 FareStart
 Farms for Life
 Federal Way Community
 Caregiving Network
 Federal Way Senior Center
 Feed Kiddos
 Feeding San Diego
 Fire Fighters Burn Institute
 First Steps Center for Autism &
 Developmental Disabilities
 First Story
 Fisher Foundation
 Fishline – Poulsbo
 Focus On Youth
 Food Backpacks 4 Kids
 Food Lifeline
 Forgotten Children's Fund
 Foundation for Edmonds School
 District
 Franklin High School BSU
 Fred Hutchinson Cancer Center
 Friends of Children of Walla Walla
 Friends of Placer County High
 School
 Friends of Roxhill Elementary
 Friends of Switchpoint, LLC
 Friends of the Children

Friends of the Children – Lane
 County
 Friends of the Children – Western
 Montana
 Friends of the Farms
 Friends of Thurgood Marshall
 Elementary (FTME)
 Friends of Tops
 Friends of Youth
 Furniture Share
 Fusion
 Gage Academy of Art
 Garfield High School
 Generation Alive
 George Pocock Rowing
 Foundation
 Gifts from the Heart Food Bank
 Gig Harbor Tides Scholarship
 Foundation
 Girls on the Run Puget Sound
 Girls on the Run Utah
 Going Beyond Borders
 Good Cheer Food Bank
 Grace Institute
 Grad Nights
 Graham Hill Elementary School
 PTA
 Grays Harbor College Foundation
 Greater Impact
 Greater Kingston Kiwanis
 Foundation
 Greenlake Elementary PTA
 Habitat for Humanity of Mason
 County
 Habitat for Humanity of North
 Idaho
 Habitat for Humanity of
 Snohomish County
 Habitat for Humanity Seattle-King
 and Kittitas Counties
 Hailey Public Library Friends
 Hamilton PTSA
 Hamptons Community Foundation
 Harbor Hope Center
 Haven House Food Bank
 Hearts 4 Heros USA
 Hearts Landing Ranch
 Hearts with a Mission

Helping Women Period
Helpline House
Helpline@SonBridge
Hidden Manna
Highland Park PTA Family Support
Worker Program
Highland Terrace PTA
Highline School Foundation
Historic Downtown Snohomish
Association
Homage Meals on Wheels
Program
HomeAid Puget Sound
Homes of Hope
HomeSight/Sam Smith Fund
Hope Creek Charitable
Foundation
Hope Festival
Hopelink
Housing Resources Bainbridge
Hunger Fighters
Hunger Intervention Program
I Can And I Will Guild
Idaho Basecamp Inc.
Imagine Children's Museum
Imagine Housing
Impact Northwest
Impactful Fund, LLC
Integrated Learning Institute
Interagency Academy
Interagency at University District
Youth Center
InterimCDA
Interlake High School – A Day
of Champions
Invested
Island Senior Resources
Islandwood
Issaquah Community Services
Issaquah Food and Clothing Bank
Issaquah School Foundation
Jake's Journey Home
James Baldwin Elementary PTO
JazzED
Jewish Family and Child Services
Jewish Family Services
John Rogers Elementary

John Rogers PTA
JoyRx
Jubilee Reach
Juma Ventures
Junior Achievement
Just Men In Recovery
Kelso Public Schools Foundation
Ken Freed
Kent Food Bank & Emergency
Services
Kids and Paper
Kids First
KidVantage
Kinderling
King County Sexual Assault
Resource Center
Kingston Cares
Kingston-North Kitsap Rotary Club
Kitsap Rescue Mission
Kiwanis Operation Santa
Klamath & Lake County Food Bank
La Conner Sunrise Food Bank
Lake City High School
Lake Union Rotary Foundation
Lake Washington Institute of
Technology
Laurelhurst Elementary PTA
Level the Field Sports
LifeWire
Lift UP Portland
Lincoln High School
Linfield College
Low Income Housing Institute
Lowell Elementary
Lower Columbia College
Loyal Heights PTA
Lynnwood Food Bank
Make-A-Wish Utah
Maltby Food Bank
Mamma's Hands
Marine Corp League Toys for Tots
Mary's Place
Marysville Food Bank
McClure PTSA

McDonald International
School PTA
Meany Middle School PTSA
Mercy Housing Northwest
Metropolitan Youth Symphony
MILEAP
Milton-Freewater Public Library
Mission Community Outreach
Center
Mockingbird Society
Modera Apartments
Modern Living Services
Montlake PTA
Morrison Child and Family
Services
Mother & Child Education Center
Mother Africa
Mother Mentors Whidbey Island
Mount Baker Community Club
Mount Vernon School District
Mukilteo Food Bank
Mukilteo Schools Foundation
Multi-Communities
Multi-Service Center
MyFace
Myhen Corp
N.E.W. Hunger Coalition
NAMI Seattle
NE Emergency Food Program
Neighbor to Neighbor
Neighborhood House
NeighborImpact
New Avenues for Youth
New Beginnings
New Way Ministries
Newby-Ginnings of North Idaho
North Beach Booster Club
North Beach Medical Equipment
North Helpline
North Idaho College
Foundation, Inc.
North Kitsap Fishline
North Mason Food Bank
North Valley Food Bank
Northeast Youth Center
Northshore Schools Foundation

Northwest Child, Inc.
Northwest Family Life
Northwest University
Northwest's Child Inc.
NW Education Access
NW Harvest
NW Hope & Healing
Olympic Hills Elementary PTA
Olympic View Elementary PTA
Open Arms PCC & Real Choices
Clinic
Operation Homefront
Ophelia's Place
Opportunity Council
Oregon International Ballet
Academy
Oregon Symphony Association
Oregon Trail School Academy
Outdoors for All Foundation
Ovarian Cancer Alliance of Oregon
& SW Washington
Overlake Service League
Page Ahead Children's Literacy
Program
Pantry Packs – Lake WA Schools
Foundation
Paperpie/Anacortes Family Center
Park City Board of Realtors
Philanthropic Foundation
Park City Education Foundation
Partners at Lowell School PTA
Partners Inland NW
PAWS
Peacock Family Services
Peninsula Hawks Scholarship
Fund
Peninsula Schools Education
Foundation
PEPS
Phinney Neighborhood
Association
Pike Market Child Care And
Preschool
Play It Forward
Play Like a Girl
Plymouth Housing Group
Pongo Poetry Project

Portland Community Football Club
Portland Housing Center
Portland Tennis & Education
Power House Theatre Walla Walla
Project Beauty Share
Puyallup Food Bank
Queen Anne Elementary PTSA
Queen Anne Helpline
Rainier Athletes
Rainier Valley Food Bank
Raise the Future
Raising Girls
Rally Club Seattle
Rally Point – The Austen Ramsey
Foundation
Readiness to Learn
Reading Partners Seattle
Reading Results
Reclaim
Relatives as Parents
Renewal Food Bank
Rex Putnam Music Boosters
Rim Family Services
Rise Above
Ronald McDonald House
Ronald McDonald House Charities
of Western WA & AK
Rooted in Vibrant Communities
Roots Charter High School
Roots Young Adult Shelter
Rose Haven
Rotarun Ski Club
Rotary Club of Fair Oaks
Sacajawea Elementary PTA
Safe Families for Children
Safe Harbor Crisis Center
Sail Sand Point
Salvation Army of Camas/
Washougal
San Diego State University
Sand Point Elementary PTA
Sand Point Elementary School
Sanislo Elementary PTA
Schoolhouse Supplies
Seabrook Community Foundation



Seaside AAUW Scholarship Foundation
 Seattle Angels
 Seattle Children's Foundation
 Seattle Colleges Foundation
 Seattle Humane
 Seattle Pacific University
 Seattle Parks Foundation
 Seattle Solar Car Team
 Seattle Tennis & Education Foundation
 Seattle University
 Seattle World School
 Serving Our Kids Foundation
 Share Vancouver
 Sharnet Food Bank
 Sister Schools
 Sisters of the Holy Names
 Skagit Preschool and Resource Center
 Smart Reading
 Smart Reading of Clatsop County
 Solid Ground WA
 Solid Rock Foundation
 SOS Health Services
 Sound Foundations NW
 South Beach Food Bank
 South County Community Food Bank
 South Sacramento Interfaith Partnership Food Closet
 South Whidbey at Home
 Southeast Effective Development
 Southeast Youth and Family Services
 Sparrow Clubs USA
 Specialized Needs Recreation
 Spokane Helpers Network
 Spokane Hope
 Spokane Real Estate Services
 St. Anne School
 St. Francis House Seattle
 St. John School
 St. Luke's Episcopal Church
 St. Luke's Wood River Foundation
 St. Martin de Porres Shelter
 St. Therese Catholic Academy

St. Vincent de Paul North Idaho
 St. Andrews Nativity School
 St. Catherine Conference of St. Vincent de Paul
 St. Vincent de Paul Our Lady of Victory Conference
 St. Vincent de Paul/St. Theresa's Catholic Church
 Stanwood Camano Area Foundation
 Stanwood-Camano YMCA
 Stepping Stones of Windsor Steps
 Stevens Elementary PTA
 Stevens Elementary PTA – Tutu's Pantry
 Stroum Jewish Community Center
 Sun Valley Realtors Give
 Sunshine Division
 Support 7
 Support The Enlisted Project
 Take The Next Step
 Taproot Theatre
 Taylor Hagen Memorial Foundation
 Teen Feed
 Thanksgiving Heroes
 The Bread Booth
 The Community School of West Seattle
 The Forgotten Soldier Program
 The Foundation for Vancouver Public Schools
 The Greater Seattle Bureau of Fearless Ideas
 The Harbor, Inc.
 The Hope Festival
 The Jonah Project
 The Leukemia and Lymphoma Society
 The Lighthouse for the Blind, Inc.
 The Placer County Association of Realtors
 The Salvation Army
 The Salvation Army Anacortes Corps
 The Sharin Place
 The Sophia Way

The Stage at Burke Junction
 The Stone Soup Collaborative
 The Youth Connection
 Thrive International
 Thurston County Food Bank
 Transition Projects, Inc.
 Transitions
 Treehouse
 Turkeys and More
 Union Gospel Mission
 Union Gospel Mission Association of Spokane
 United Churches Emergency Fund
 United Way of Columbia – Willamette
 United Way of North Idaho
 United Way of The Columbia Gorge
 United Women of Faith/United Methodist Church
 University District Food Bank
 University of Washington
 University of Washington Foundation
 University Temple Children's School
 Upower, Inc.
 Urban Impact Seattle
 USO Northwest
 Utah Asian Charitable Foundation
 Utah Kids Foundation
 Valeo Vocation
 Vashon Household
 Vashon Schools Foundation
 View Ridge Elementary
 View Ridge Elementary Self Help
 Viewlands Elementary School
 Village Cohousing Works
 Vine Maple Place
 Vision House
 Volunteers of America
 Volunteers of America Western Washington
 Walla Walla Area Crime Watch
 Walla Walla Senior Citizens Center Inc.
 Warrenton Kids Inc.

Washington Alliance for Better Schools
 Washington Kids in Transition
 Washington Middle School
 Washington State University
 Wellspring Family Services
 Wenatchee Valley Children's Guild
 Wenatchee Valley YMCA
 West Central Abbey
 West Sacramento – Mercy Coalition
 West Seattle Elementary School
 West Seattle Food Bank
 West Sound PAWS
 West Woodland PTA
 Western Washington University
 Westgate PSO
 Weston Food Pantry
 Westside Baby
 Westwind Stewardship Group
 Whidbey Camano Land Trust
 Whidbey Island Nourishes
 White Center Food Bank
 White Center Heights Elementary PTA
 Whitman Middle School PTA
 Whitman Middle School PTSA
 Whitworth College
 Wild Bird Charity
 Wing Luke Elementary
 Women and Children's Free Restaurant
 Women's and Children's Alliance
 Wood River Community Orchestra
 World Central Kitchen
 Y.E.T.I.
 Yakima Valley Veterans Coalition
 YMCA of Greater Seattle
 YMCA of Greater Seattle – University Family YMCA
 YMCA of Walla Walla
 Yolo Diaper Bank
 Youth Eastside Services
 Youth Theater Northwest
 YWCA of Walla Walla
 YWCA Seattle/King/Snohomish
 ZGiRLS Foundation



**On behalf of the
 Windermere
 Foundation,
 thank you for your
 continued support.**

Because of your generosity, we're able to help prevent eviction, ensure families have access to food, and provide emergency assistance where it's needed most. Together, we're making a real difference in the lives of individuals and families across the communities we serve.

The Windermere Foundation is always striving to deepen its impact in our communities. You can help us make a difference by donating today.

[CLICK TO DONATE >](#)



© 2026 Windermere Real Estate Services Co. All rights reserved. The Windermere name, Windermere Real Estate logo, and Windermere Foundation logo are registered trademarks of Windermere Real Estate Services Co.

